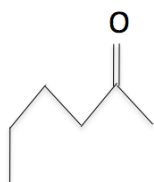


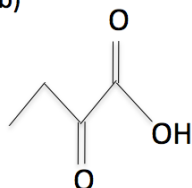
Classificação das cadeias carbônicas aberta

1) Classifique as cadeias carbônicas a seguir:

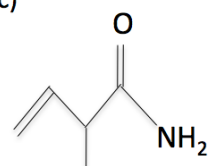
a)



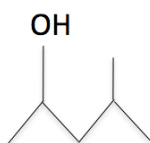
b)



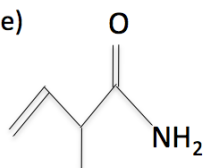
c)



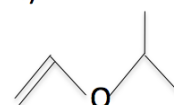
d)



e)



f)



Gabarito

- a) Aberta – Saturada – Homogênea – Normal
- b) Aberta – Saturada – Homogênea – Normal
- c) Aberta – Insaturada – Homogênea – Ramificada
- d) Aberta – Saturada – Homogênea – Ramificada
- e) Aberta – Insaturada – Homogênea – Ramificada
- f) Aberta – Insaturada – Heterogênea – Ramificada